

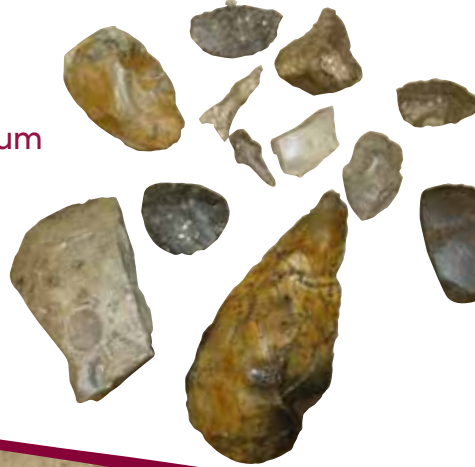
stone age to iron age

Schools Outreach Session
for Key Stage 2

Learn how a real archaeologist finds out about the past by inviting a museum expert to your school.

Handle genuine Stone Age and Iron Age museum artefacts and use them to create a time line.

Have fun trying on costumes, creating cave paintings and striking your very own Iron Age coin to keep!



Curriculum Links

KS2 History: Hi2/1.1

'Pre-Roman Britain'



Session length: 1 hour